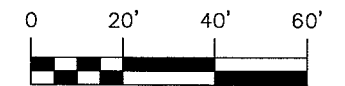


~ LOCATION MAP ~

~ LEGEND ~

- — — — — PROPERTY LINE
- — — — — RIGHT OF WAY LINE
- ⊕ HYDRANT
- E — E — EXISTING ELECTRIC LINES
- ⊕ UTILITY POLE
- ⊕ LIGHT POLE
- ○ — ○ — EXISTING CHAIN LINK FENCE
- ○ — ○ — PROPOSED CHAIN LINK FENCE
- OH — PROPOSED GMP OH LINE
- — — — — PROPOSED GMP UG LINE



SCALE: 1"=20'

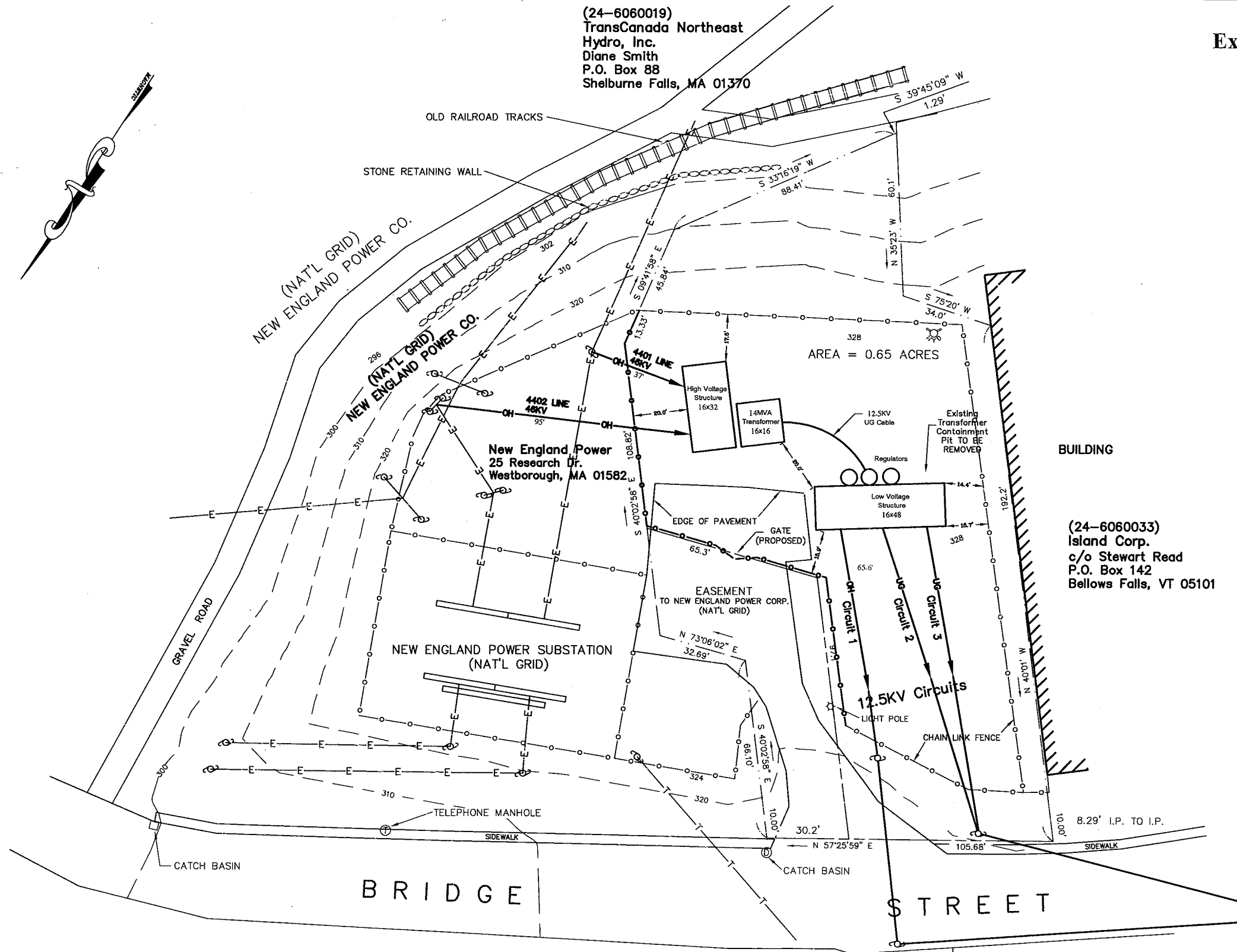
(24-6060019)  
 TransCanada Northeast  
 Hydro, Inc.  
 Diane Smith  
 P.O. Box 88  
 Shelburne Falls, MA 01370

BUILDING

(24-6060033)  
 Island Corp.  
 c/o Stewart Road  
 P.O. Box 142  
 Bellows Falls, VT 05101

(24-6060040,  
 6060048)  
 Cota & Cota, Inc.  
 4 Green Street  
 Bellows Falls, VT 05101

(24-6060030)  
 John Ross  
 Island Street  
 Bellows Falls, VT 05101



REV	DESCRIPTION	DATE	CHK

**BELLOWS FALLS**  
 PROPOSED BRIDGE ST. S/S SITE PLAN  
 (12.47KV)

DRAWN: LAW	CHECKED: PK	APPROVED: PK	SCALE: 1"=20'
DATE: 10-1-07	DRAWING NO. 8-Falls Lot Survey w/Steel	SHEET: 1 OF 1	